

# Oklahoma's Health Landscape

SPI 2015

Carly Putnam  
cputnam@okpolicy.org  
918 394 7944



**OKPOLICY.ORG**

---

Oklahoma Policy Institute



Overall Oklahoma ranking: 47			
Pertussis	6	Preterm birth	43
Binge drinking	7	Lack of health insurance	44
Low birthweight	24	Obesity	44
Infectious disease	25	Occupational fatalities	44
Children in poverty	26	Poor mental health days	44
Chlamydia	27	Dental visit, annual	44
High school graduation	30	Heart disease	44
Air pollution	33	High cholesterol	44
Insufficient sleep	35	Cancer deaths	45
Dentists	37	Drug deaths	45
Stroke	37	Smoking	45
Diabetes	39	Heart attack	45
Adolescent immunization	39	Premature death	46
Salmonella	39	Vegetables	46
Suicide	40	Immunization	47
Violent crime	41	Physical inactivity	47
Teeth extractions	41	Physical activity	47
Poor physical health days	42	Cardiovascular deaths	48
High blood pressure	42	Fruits	49
Infant mortality	43	Teen birth rate	49

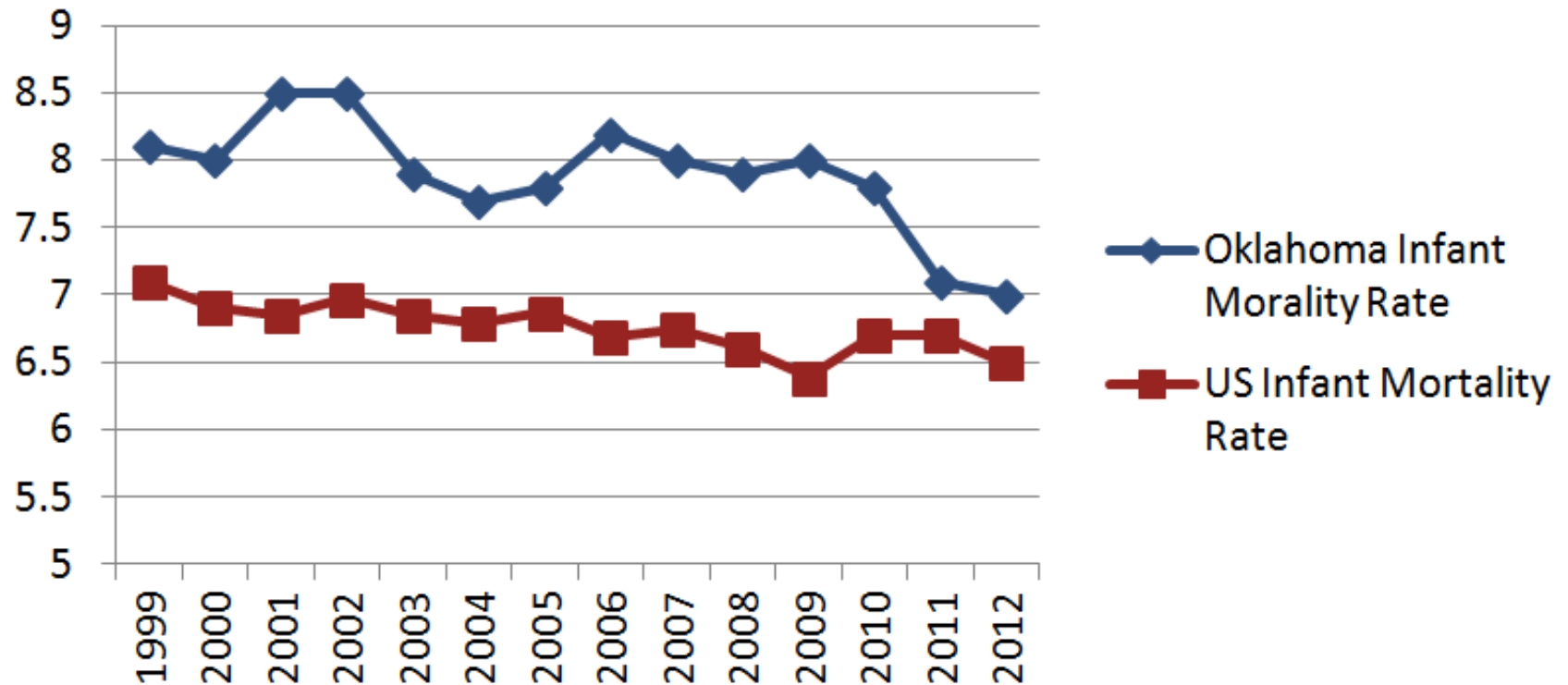
Source: United Health Foundation, 2014



# Health Status: Heart disease

- Oklahoma ranked 6th nationwide for prevalence of heart disease in 2013.
- Heart disease is the leading cause of death in Oklahoma, accounting for 1 in 4 deaths in 2012.
  - 50 percent higher death rate for men than for women
  - Rates highest for African-, Native Americans

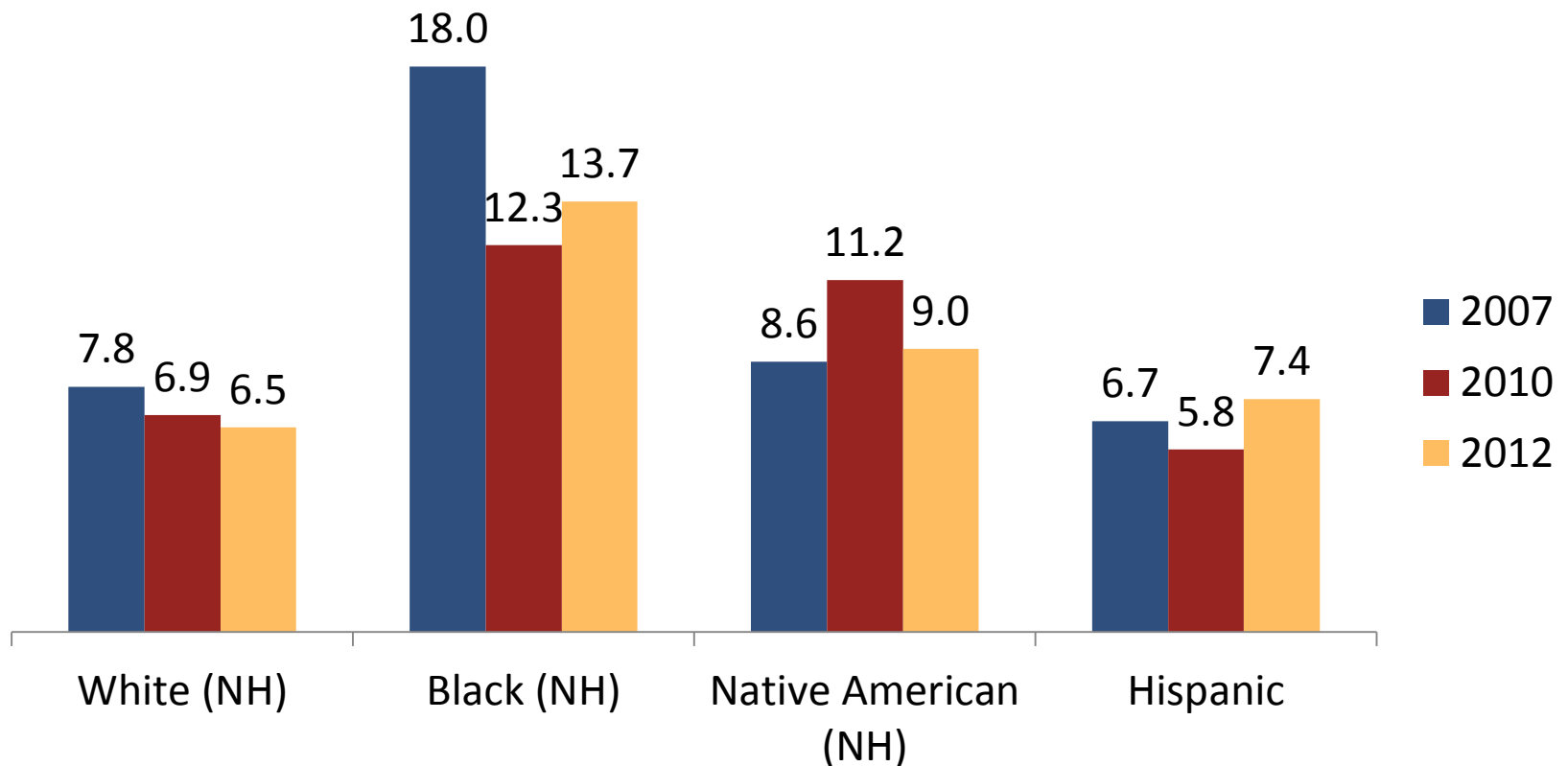
# Health status: infant morality



Source: State of the  
State's Health 2014

# Health disparities: infant mortality

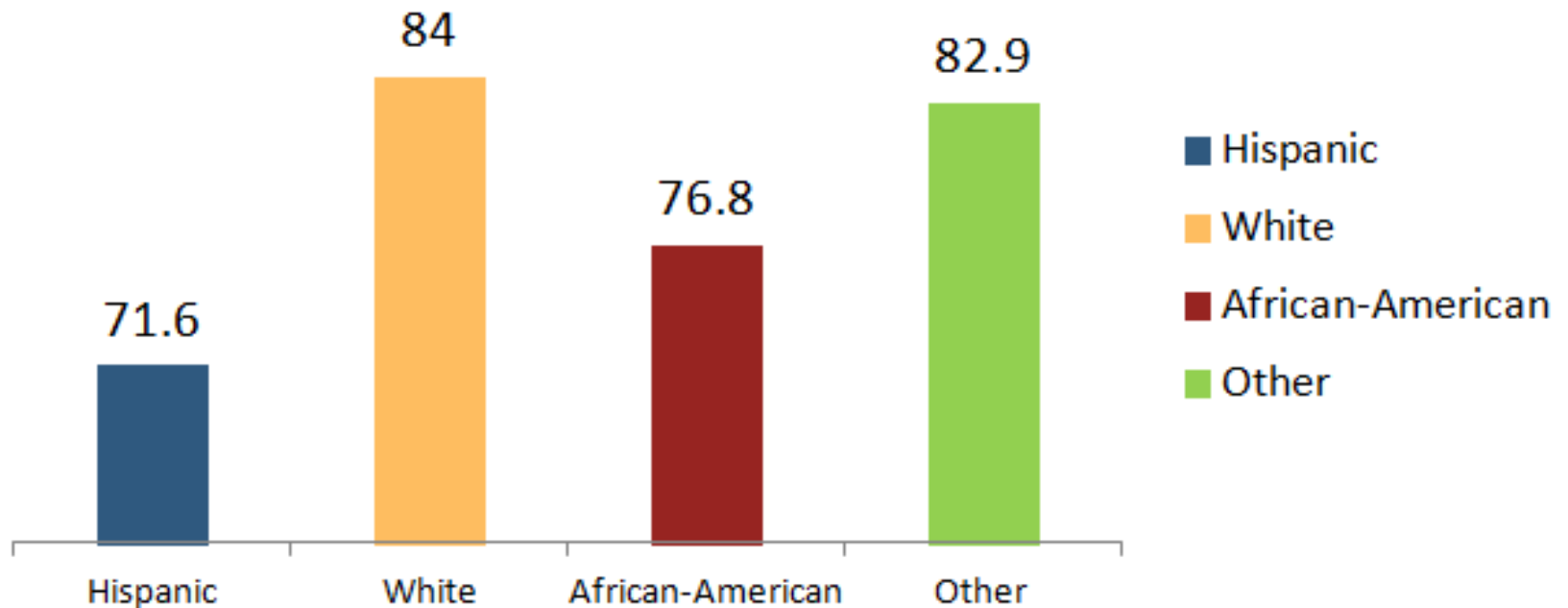
## Infant mortality rate in Oklahoma, by race, 2007 - 2012



Source: State of the State's Health 2014

# Health disparities: access to care

Adults that could get Medical Care when needed by Race/Ethnicity (2012 - 2013)

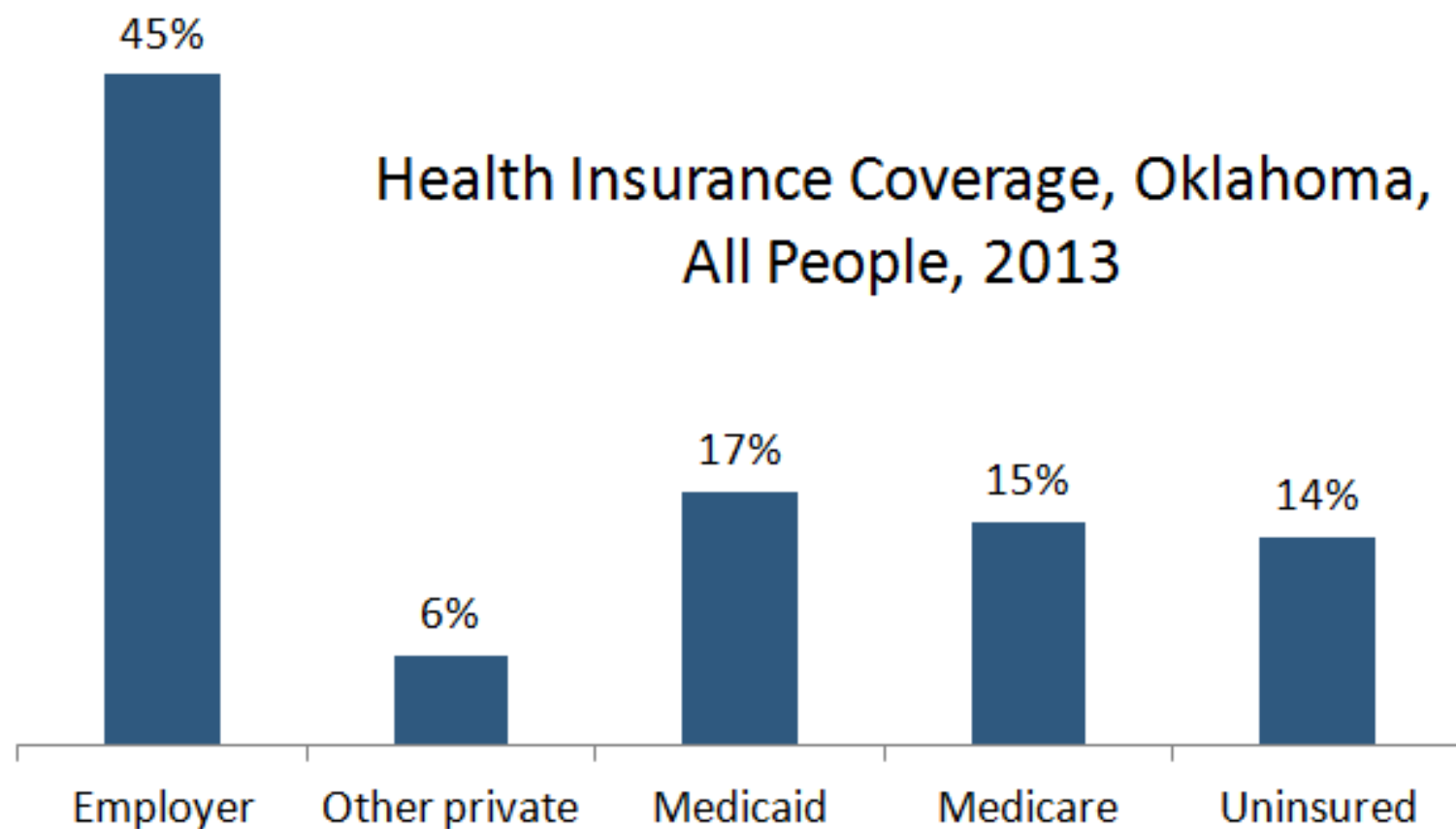






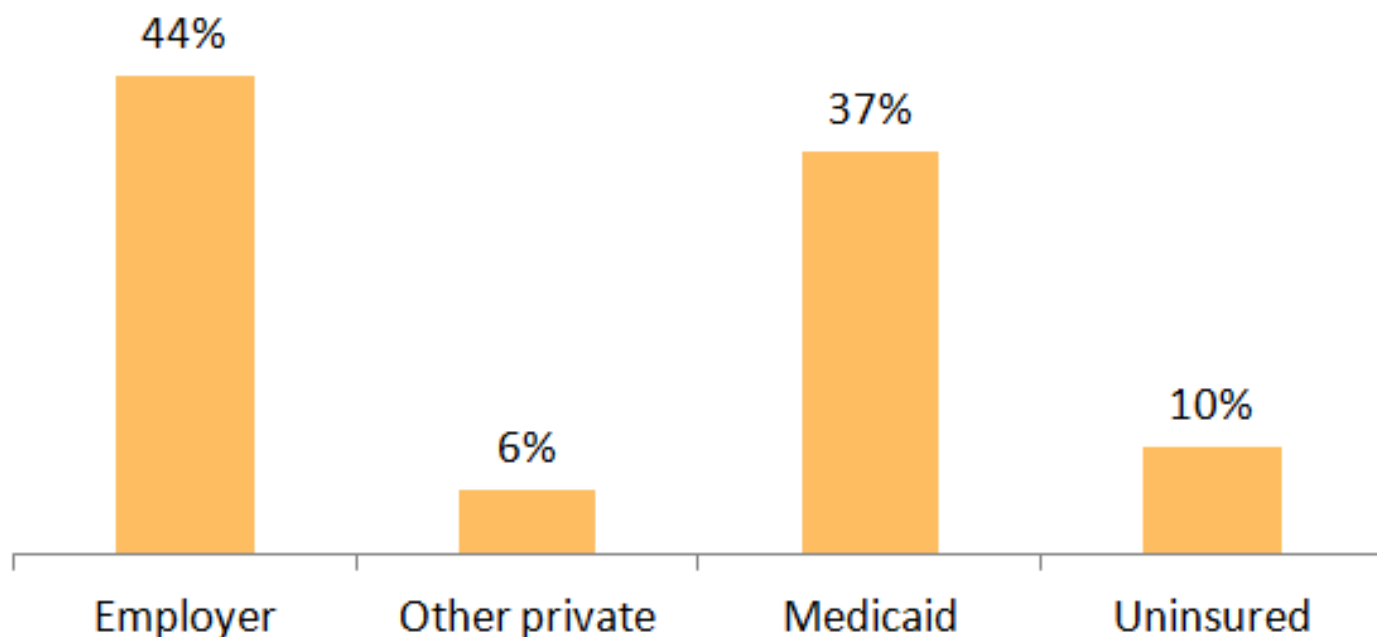
# The Uninsured in Oklahoma

- Oklahoma 35<sup>th</sup> for overall health insurance coverage in 2013
  - Uninsured rates improve with age, income and education level
  - Racial disparities persist:
    - White: 15.6 percent
    - Black: 24.5 percent
    - Native American: 8.7 percent
    - Hispanic: 45.1 percent

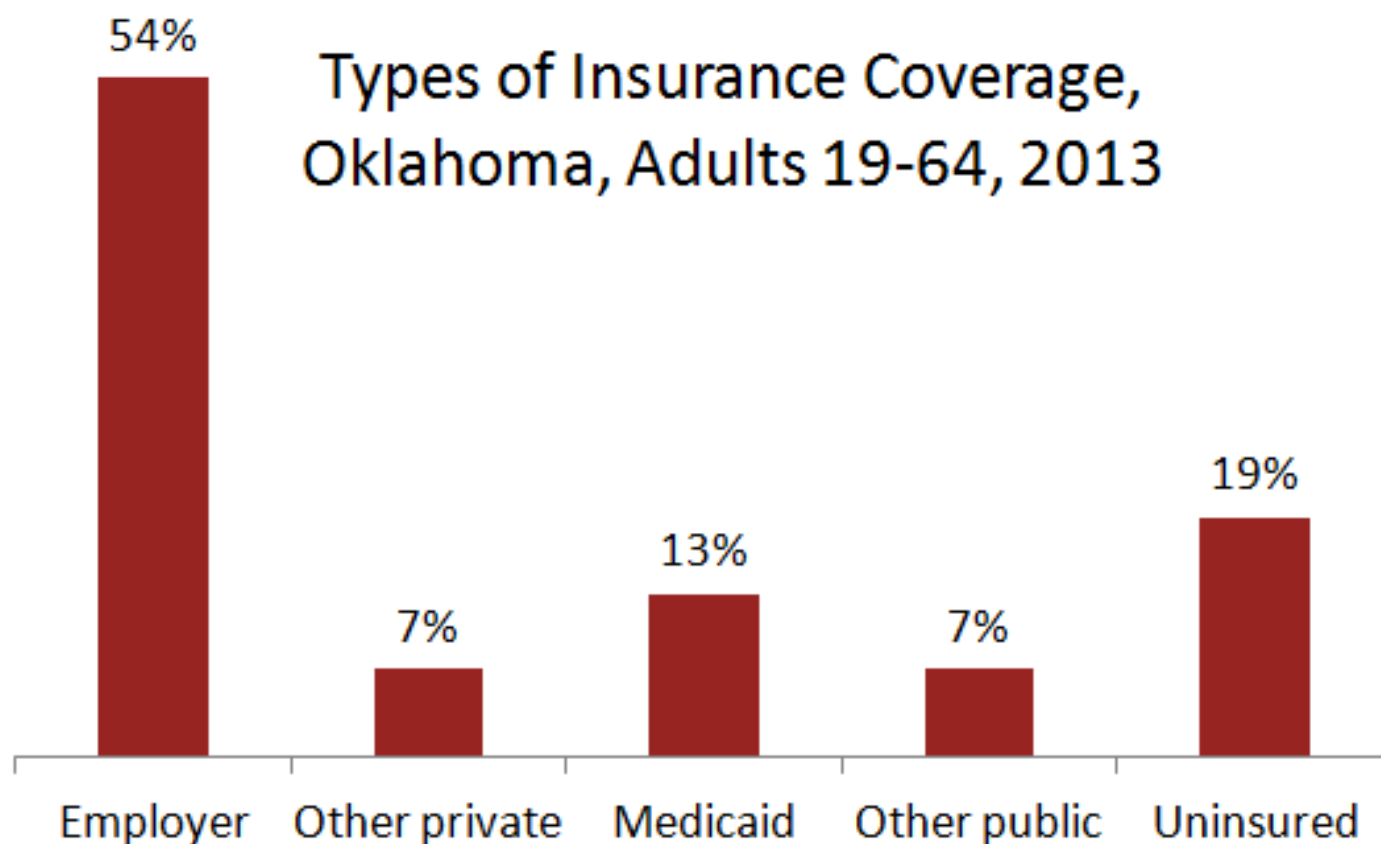


Source: Kaiser Family Foundation

## Types of Health Insurance Coverage, Oklahoma, Children 0-18, 2013



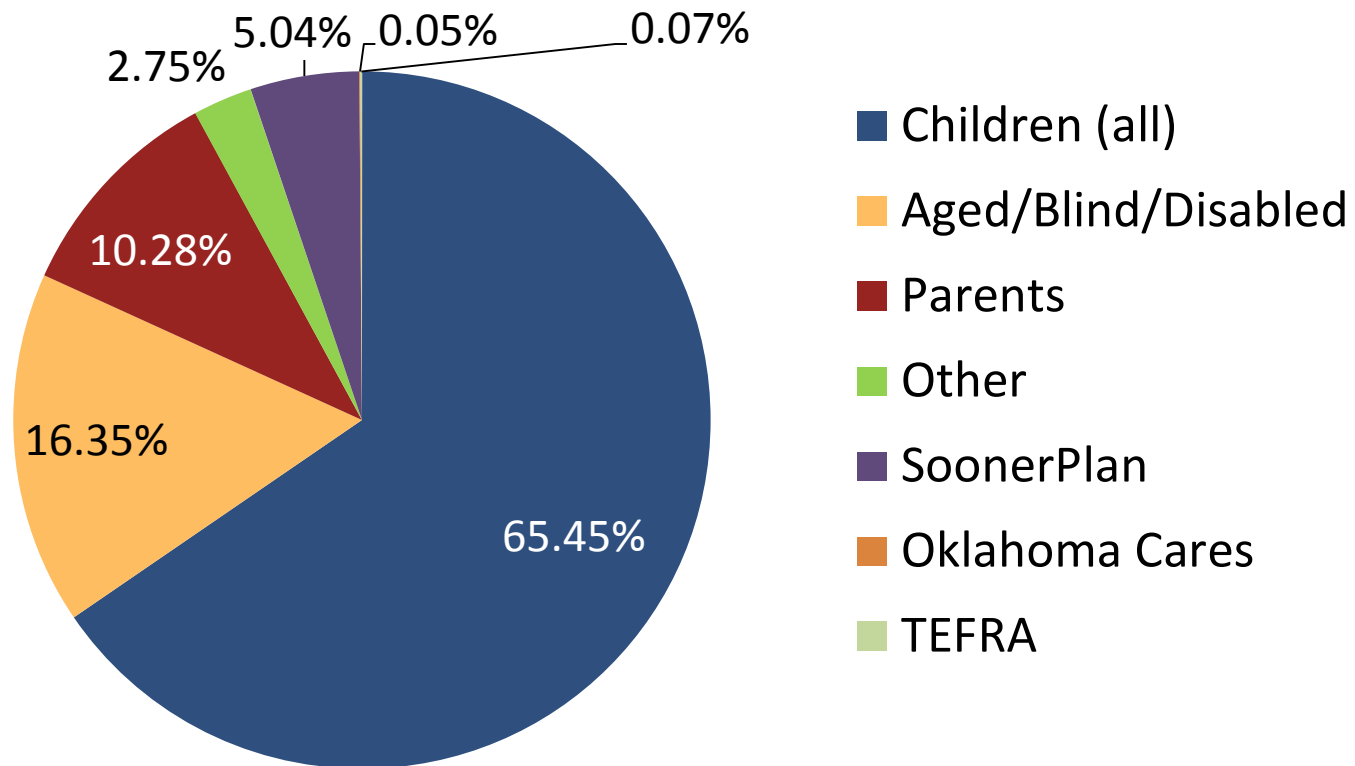
Source: Kaiser Family Foundation



Source: Kaiser Family Foundation

# Medicaid in Oklahoma

- Medicaid covered 826,689 people in Oklahoma as of June 2015





# The Affordable Care Act

- The ACA builds on the existing US health care system by strengthening and expanding the three pillars of health insurance coverage:
  - Employer-sponsored coverage
  - Public insurance
  - Individual coverage
- Two principle mechanisms for expanding coverage:
  - Premium tax credits
  - Medicaid expansion



# The Affordable Care Act

- Insurance can be purchased on online marketplaces
- 106,392 Oklahomans enrolled on the marketplace
- 82% received premium assistance (tax credits)

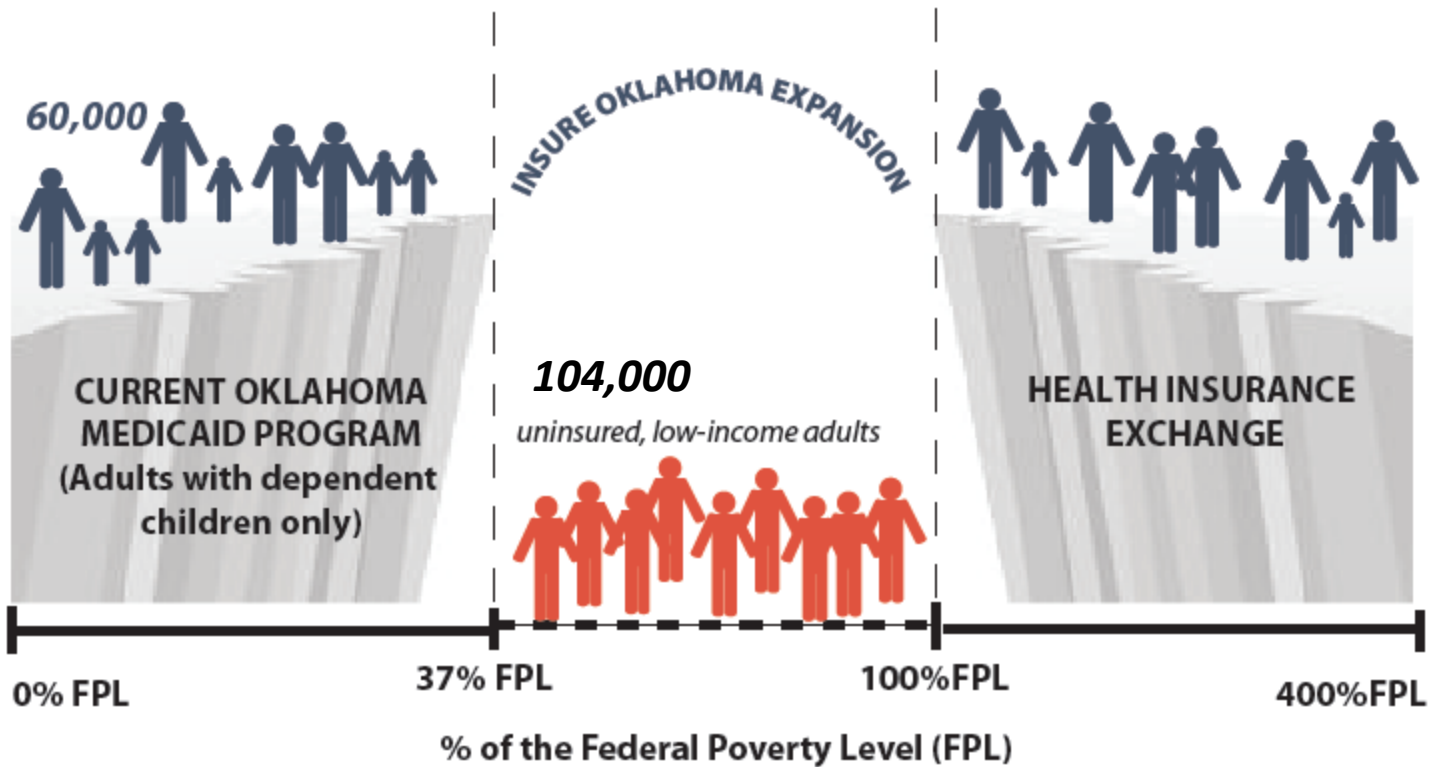
Level	Monthly Premium	CoPay or Out-of-Pocket Costs
Platinum	Highest	Lowest
Gold	High	Low
Silver	Middle	Middle
Bronze	Low	High



# Medicaid & The ACA

- States have the option to expand their Medicaid programs to those earning below 100 percent FPL
- Twenty-one states, including Oklahoma, are not moving forward with expansion at this time.
- Federal government pays 100 percent of costs through 2016; scales back to and remains at 90 percent by 2020.

# The Coverage Crater



# Insure Oklahoma



Source: Oklahoma Health Care Authority (03/10/15)



# Questions?

For more information, see  
[okpolicy.org/issues/healthcare](http://okpolicy.org/issues/healthcare)

Carly Putnam

[cputnam@okpolicy.org](mailto:cputnam@okpolicy.org)

918 794 3944



**OKPOLICY.ORG**

---

Oklahoma Policy Institute