

Set Up to Fail: Barriers to Exiting Poverty (and a few bright spots)

Carly Putnam

SPI 2015

cputnam@okpolicy.org



OKPOLICY.ORG

Definitions & Key Concepts

Relative

Merriam Webster's Definition

(a): the state of one who lacks a usual or socially acceptable amount of money or material possessions



OKPOLICY.ORG

Definitions & Key Concepts

Resources vs. Needs

poor

(adjective)

when you have too
much month at the
end of your money.



OKPOLICY.ORG

Definitions & Key Concepts

Central feature

Difficulty meeting basic
human needs

Definitions & Key Concepts

Federal Poverty Level

2015 POVERTY GUIDELINES FOR THE 48 CONTIGUOUS STATES
AND THE DISTRICT OF COLUMBIA

Persons in family/household	Poverty guideline
1	\$11,770
2	15,930
3	20,090
4	24,250
5	28,410
6	32,570
7	36,730
8	40,890
For families/households with more than 8 persons, add \$4,160 for each additional person.	



OKPOLICY.ORG

Definitions & Key Concepts

Safety Net

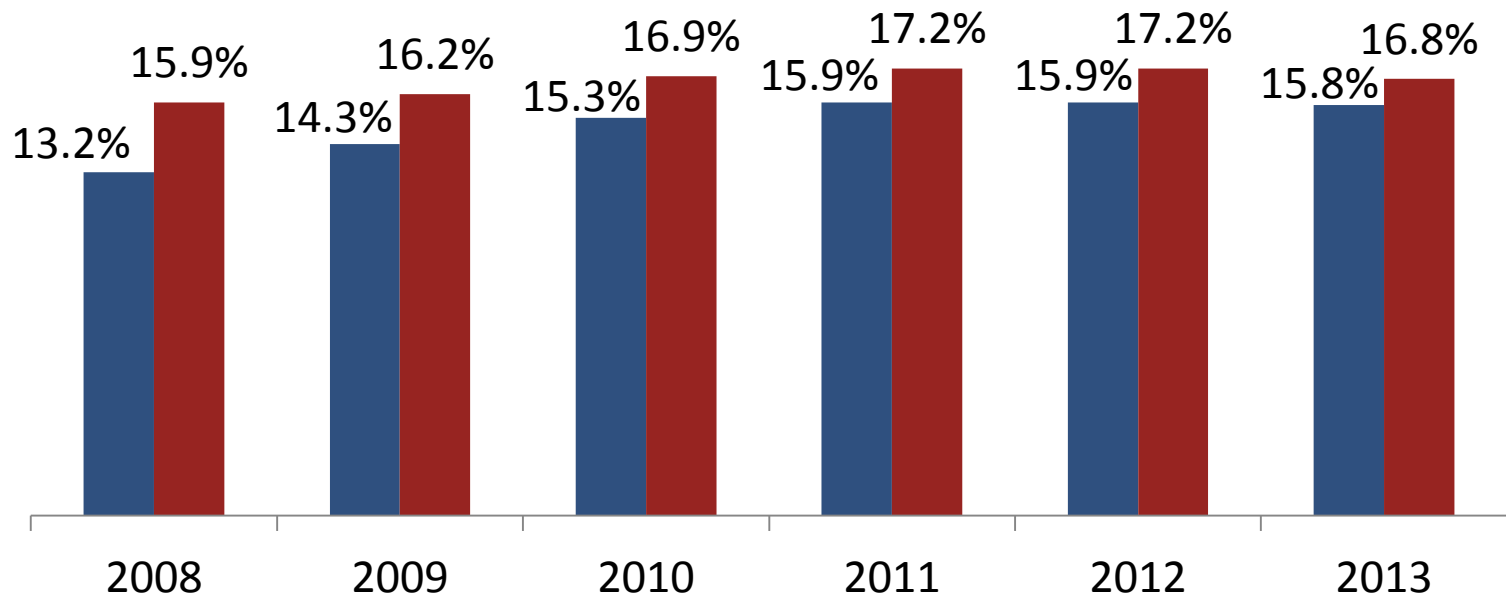
- [Theory vs. Reality](#)



OKPOLICY.ORG

State-level Data & Trends

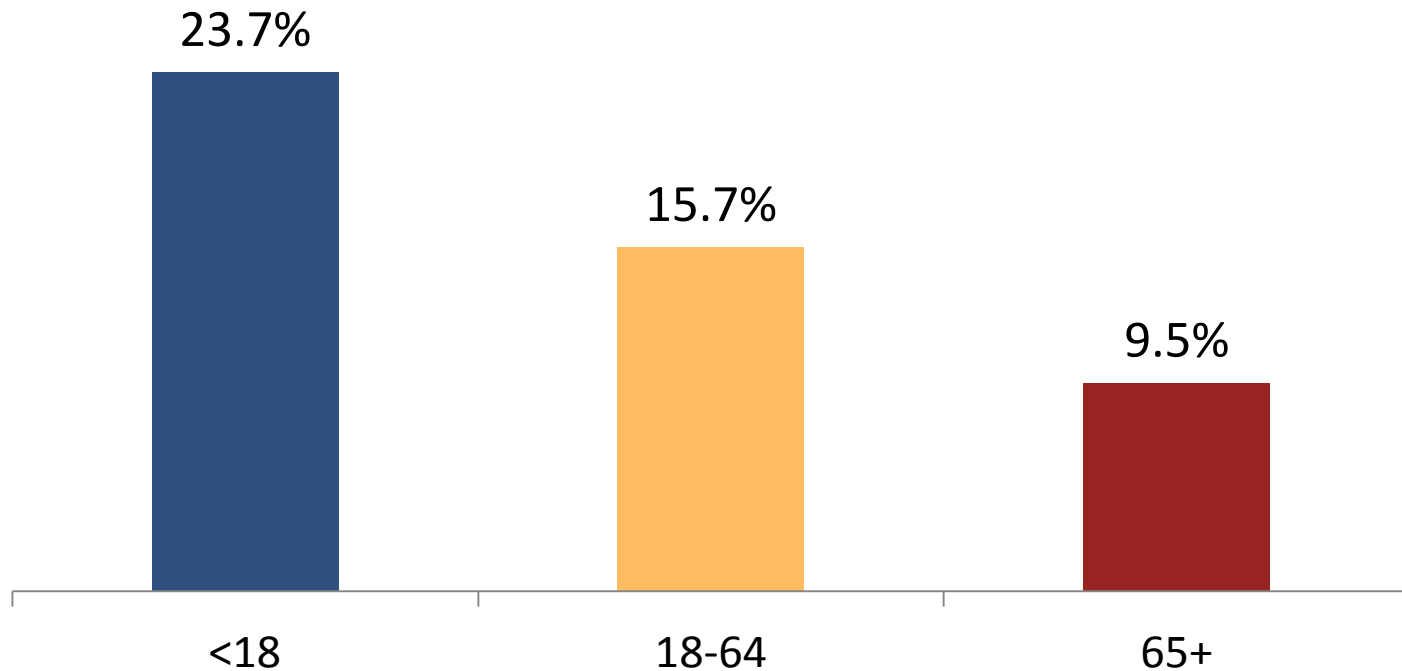
Poverty rate: Oklahoma vs. US 2008-2013



OKPOLICY.ORG

State-level Data & Trends

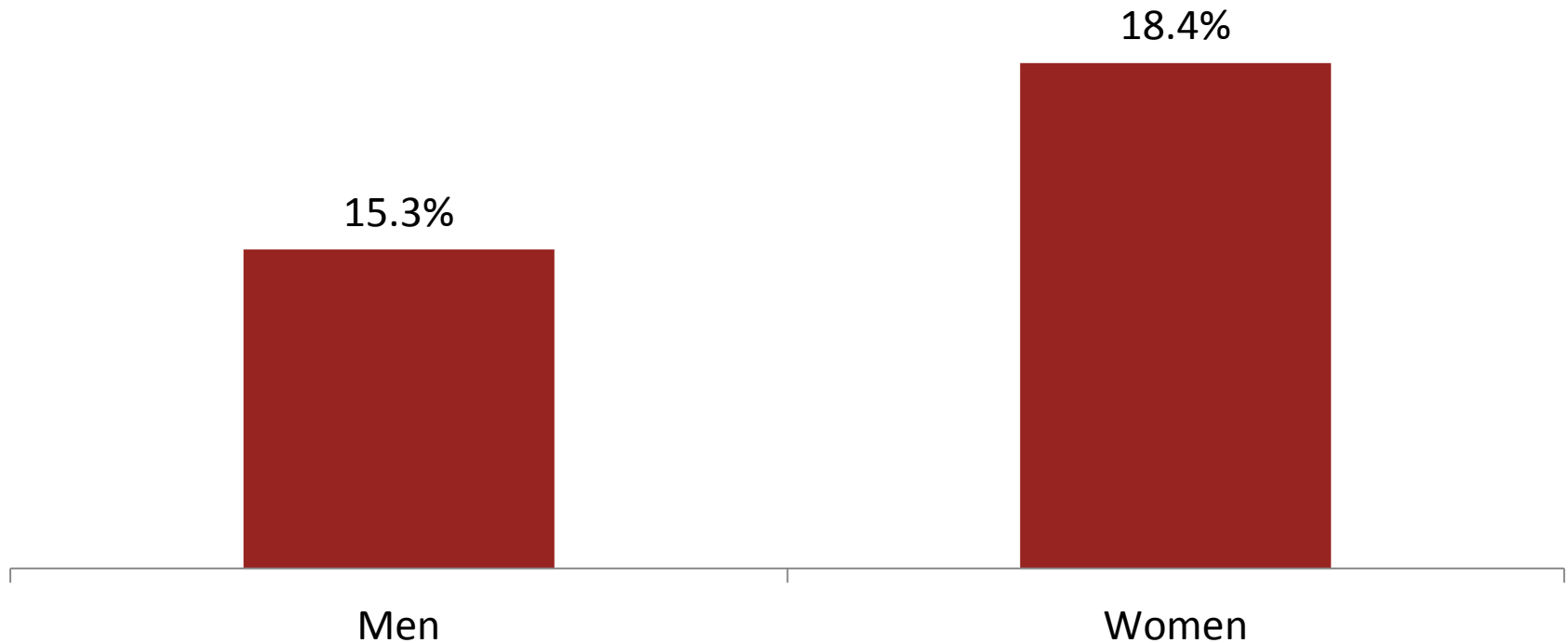
Oklahoma Poverty Rate by Age, 2013



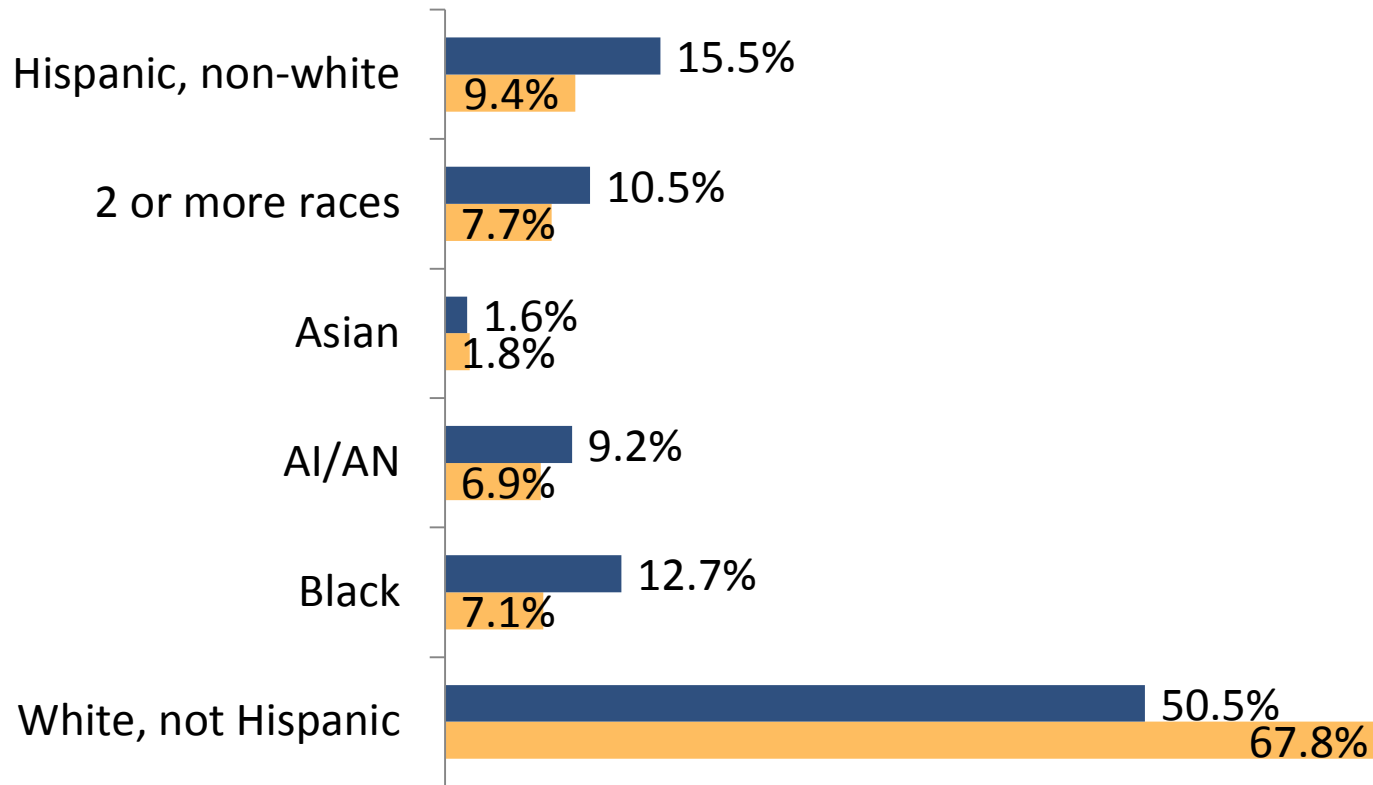
OKPOLICY.ORG

State-level Data & Trends

Oklahoma adult poverty rate, by
gender, 2013

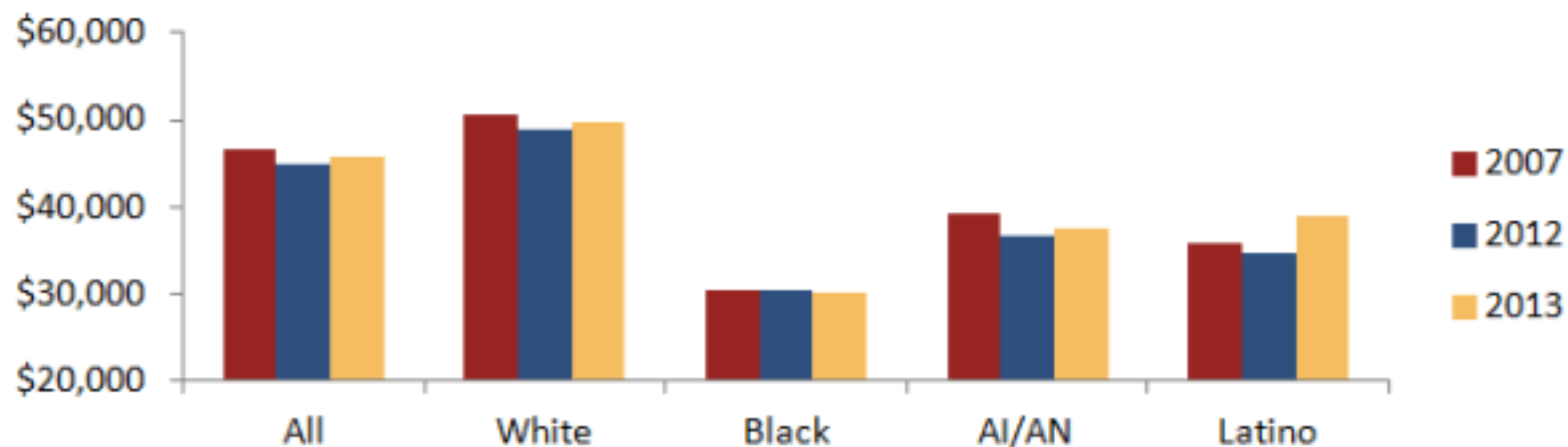


Percent in total state population vs. percent of those in poverty, 2013



OKPOLICY.ORG

Median Oklahoma incomes by race/ethnicity, adjusted for inflation



OKPOLICY.ORG

Causes & Consequences

1. Underemployment & Low-wage Work

- Nearly 1 in 3 jobs are in occupations where the median pay is below poverty
- 73% of Oklahoma families <200% of poverty work
- The state consistently tops the nation for the share of adult workers that are not fully employed
- People in eastern Oklahoma and people of color are unemployed at disproportionately higher rates

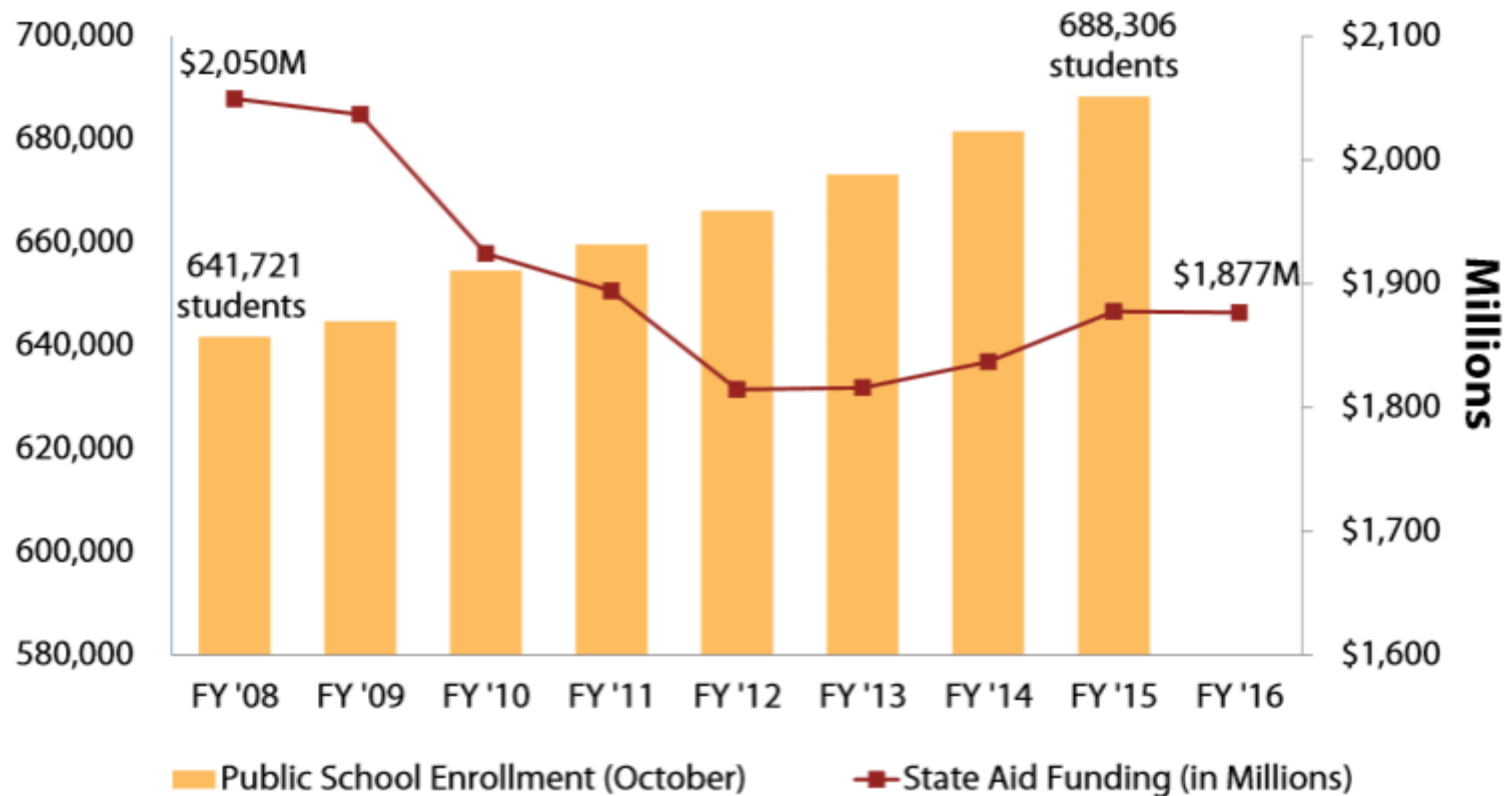


OKPOLICY.ORG

Causes & Consequences

2. Low Educational Attainment

Figure 4: Public School Enrollment and State Aid Funding



Note: State Funding excludes money allocated for textbooks

Causes & Consequences

3. Mass Incarceration

- Incarceration takes a lifelong toll on an individual's earning capacity
- There are significant barriers to stable employment and financial stability for felons and ex-offenders
 - Employment, housing discrimination
 - Fee payments, drivers licenses



OKPOLICY.ORG

Causes & Consequences

4. Hunger and poor health

- 7.5% of households went hungry at some point during the year because they couldn't afford food
- Over 500,000 residents are uninsured
- Malnutrition, poor health, or untreated illness stunt a worker's capacity to earn and drains their assets.



OKPOLICY.ORG

Causes & Consequences

5. Inequality

Women

- The only state where the life expectancy for women declined during the past decade
- Nearly the lowest percentage of female state legislators

People of color

- Have been unemployed at nearly twice the rate of whites since WWII
- Disproportionately impacted by criminal justice system



OKPOLICY.ORG

Causes & Consequences

5. Inequality: Moving up the ladder?

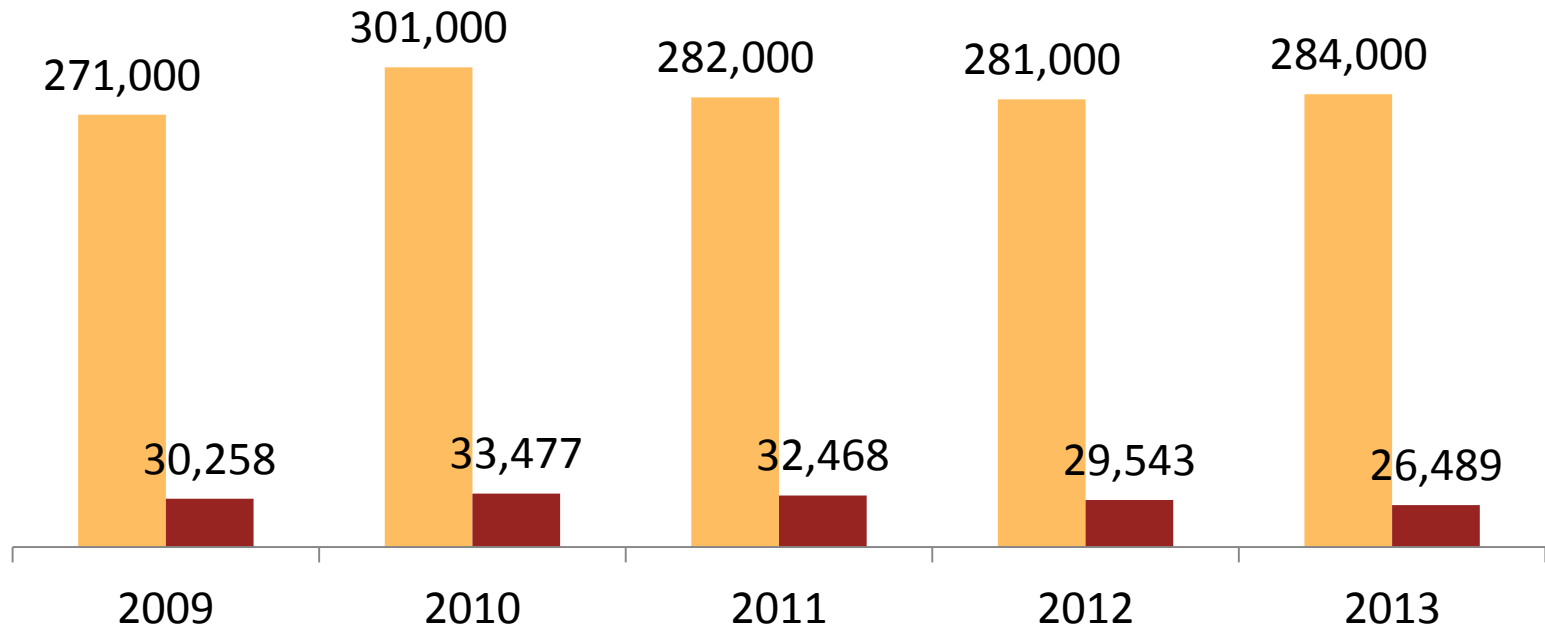
- Lowest absolute mobility in Oklahoma
- Lowest relative upward mobility
- Among the ***highest*** in terms of downward mobility
 - 33% of residents move down 10 or more percentiles of the earnings distribution during their working years



OKPOLICY.ORG

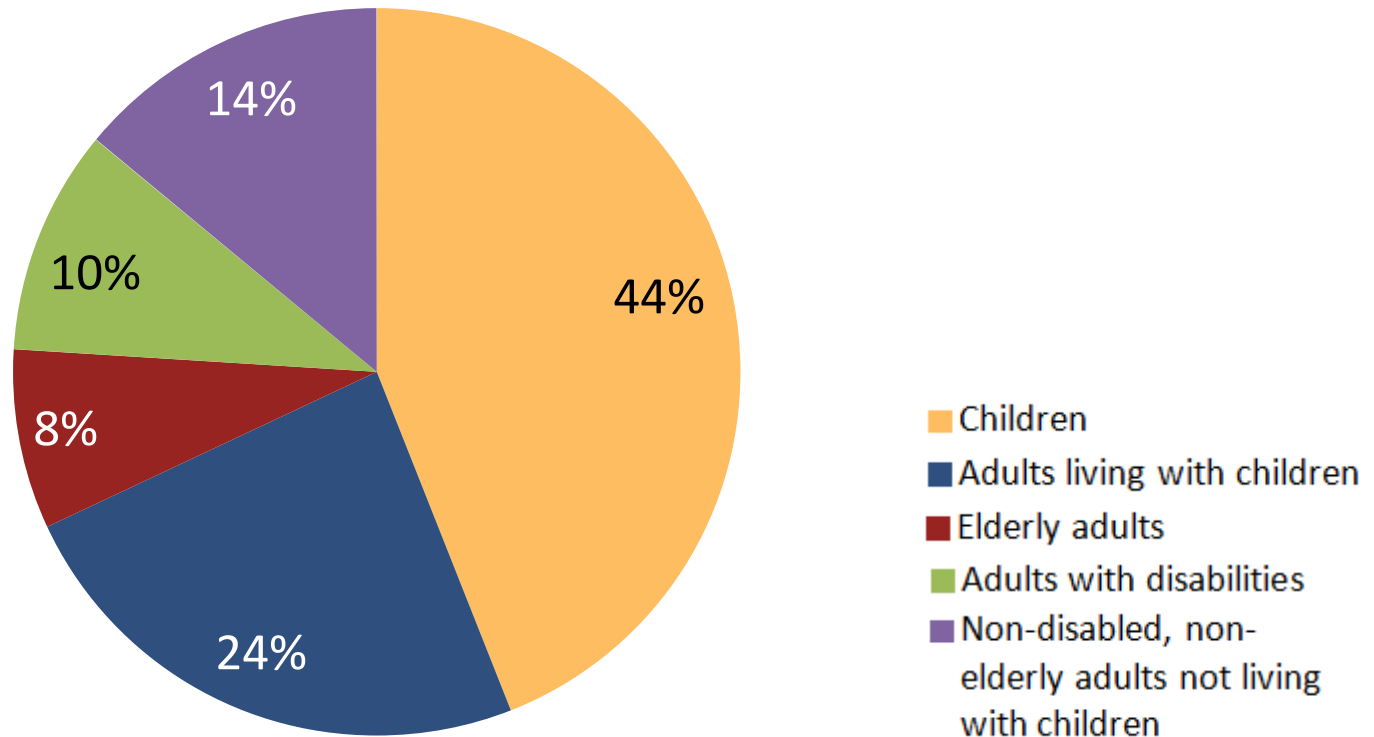
TANF

- Children in families where no parent has regular, full-time employment
- Children receiving TANF



OKPOLICY.ORG

SNAP recipients per month, Oklahoma, 2013



EITC



OKPOLICY.ORG

Questions?

Carly Putnam

918 794 3944

cputnam@okpolicy.org



OKPOLICY.ORG